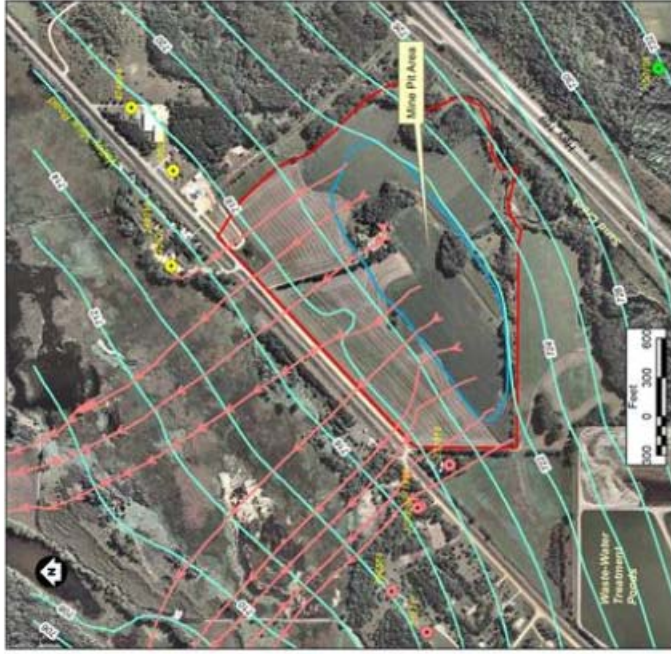


Groundwater Head and Flow Paths:  
Without Future City of Jordan Wells



Groundwater Head and Flow Paths:  
With Future City of Jordan Wells

**EXPLANATION**

- Predicted Groundwater Flow Path
- Predicted Groundwater Level (ft. MSL)
- Proposed Mine Pit Perimeter
- Mine Site

Contour Interval = 2 ft

Figure 3-16

MODELED WATER TABLE ELEVATION AND  
GROUNDWATER FLOW PATHS AT PROJECT  
SITE WITH AND WITHOUT FUTURE  
CITY OF JORDAN WELLS  
Jordan Aggregates EIS  
Scott County, Minnesota