

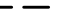





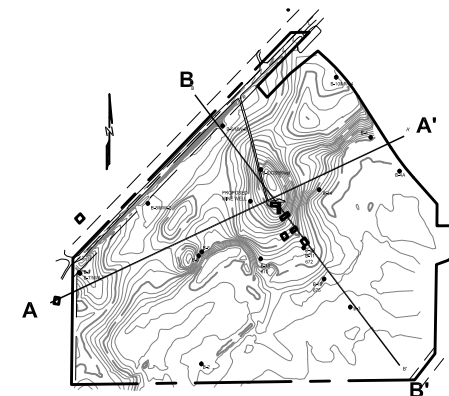
LEGEND

-  SCREENED INTERVAL
-  STATIC WATER ELEVATION (8-26-09)
-  PROPOSED MINE EXCAVATION DEPTH
-  UNCONSOLIDATED SAND & GRAVEL
-  ST. LAWRENCE FORMATION;
FINE SANDSTONE/SILTSTONE
-  FRANCONIA FORMATION;
SANDSTONE/SILTSTONE/SHALE

NOTES:

- 1) VERTICAL EXAGGERATION = 10X
- 2) BORING LOCATIONS OFFSET 20 TO 130 FEET FROM SECTION LINE
- 3) BEDROCK SURFACE ELEVATION OBTAINED FROM SCOTT COUNTY GEOLOGIC ATLAS

CROSS-SECTION LOCATIONS



McCain and Associates, Inc.
 5300 Highway 12
 Maple Plain, MN 55359
 ph 952-346-3900
 fx 952-346-3900

FIGURE 13

GEOLOGIC CROSS-SECTION A-A'

JORDAN AGGREGATES PROPOSED SAND AND GRAVEL MINE
 SAND CREEK TOWNSHIP, SCOTT COUNTY, MN